



Sheridans Hard Rock Quarry

Driver Code of Conduct

And

Traffic Management Plan



Introduction

The purpose of this Code of Conduct and Traffic Management Plan is to provide a clear and concise record of what is expected by all professional drivers working for and sub-contracting to Sheridans Hard Rock Quarry Pty Ltd.

Objectives

The main objective of this plan is to ensure the safety of all Drivers, Road Users, Employees, Visitors and Neighbours that access and egress the roads utilised by Sheridans Quarry.

To increase the awareness of heavy vehicle drivers, allowing a greater understanding of expectations by the community.

To ensure the acceptance of all legislative requirements, with an emphasis on professionalism, curtesy and the safe operation of all heavy vehicles.

To bring an increased awareness to fatigue related issues that may affect drivers.

Increase the understanding of WH&S relating to individual projects undertaken by drivers.

Sheridans Hard Rock Quarry Location

Sheridans Quarry is located on Fahey & Bulgins Rd, which runs off the un-signposted end of Cornells Rd Hernani. Access to Cornells Rd is via Bald Hills Rd which is located approximately 3.4 Klm East of the Dorrigo intersection on the Waterfall Way.

The Bald Hills Intersection is 96Klm's from Armidale on the Waterfall Way and approximately 37Klm's from Dorrigo.

Haulage Destinations

There are 3 main roads utilised by Sheridans Hard Rock Quarry

- 1, Cornells Rd leading from Bald Hills Rd into the Quarry
- 2, Bald Hills Rd leading form Cornells Rd to The Waterfall Way
- 3, The Waterfall Way travelling West to Armidale
- 4, The Waterfall Way travelling East to Coffs Harbour

Around 75% of all products are transported to Armidale and surrounding locations.

Access and Egress to Sheridans Hard Rock Quarry.

All Heavy Vehicle's accessing Sheridans Quarry must do so from the Eastern end of Bald Hills Road (off the Waterfall Way). It is forbidden for any Heavy Vehicle seeking access to the quarry to enter Cornell's Rd from the Western end of Bald Hills Rd (via the Armidale / Grafton Rd). This directive is to minimise the impact of heavy quarry vehicles on the local community.

All heavy quarry vehicles are to announce their intention to travers Bald Hills Rd, inbound or outbound, on UHF Channel 28.

It is requested that heavy vehicles intending to access Sheridans Quarry have a self-imposed speed limit of 60Kph on both Bald Hills Rd and Cornell's Rd, with the exception being at Location 4 on the Cornell Rd Google Maps print out. The speed past this residential area is 15Kph. Advisory signs warn to slow down at this location.

All inbound empty trucks must give way to outbound loaded trucks.

Quarry trucks must reduce speed when passing any oncoming vehicles (especially light vehicles)

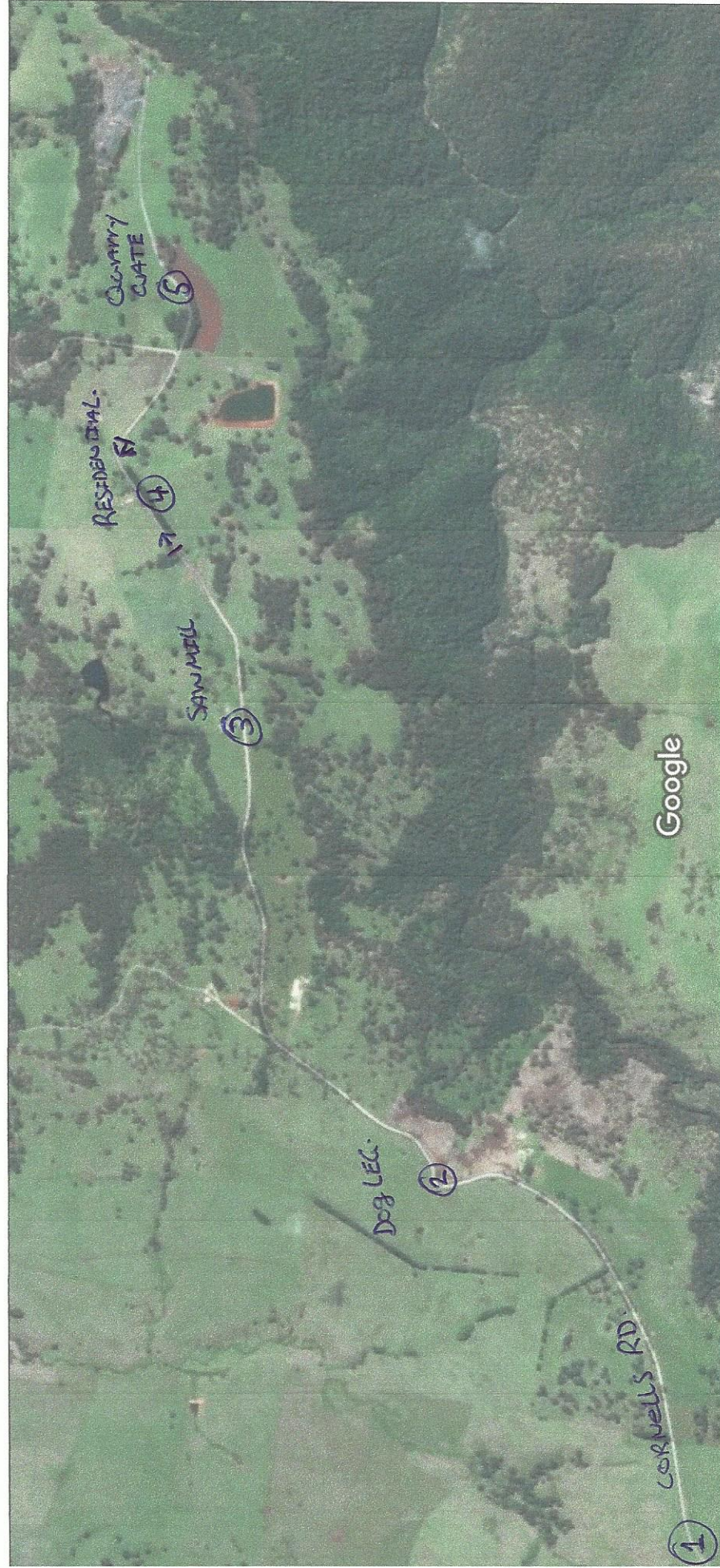
All Quarry Trucks must avoid Bald Hills Rd 15 minutes either side of the School Bus Timetable for Bald Hills Rd. 8am and 4pm weekdays. In the unforeseen circumstance that a Truck is on the same section of Bald Hills Rd as the School Bus (ie bus is late) then the Driver of that bus can be contacted on UHF channel 29. Trucks are to give way to the School Bus.

Please refer to labelled Google Maps Printout.

- A, All trucks are to access Cornell's Rd via Waterfall Way. No access permitted from the Armidale/ Grafton Rd.
- B, Heavy vehicles must announce their intention to travers Bald Hills Rd on UHF Channel 28.
- C, The speed limit for quarry trucks on Bald Hills Rd is 60Kph
- D, All inbound empty trucks must give way to outbound loaded trucks.
- E, Quarry trucks must reduce speed when passing light vehicles from the opposite direction.
- F, Quarry trucks must avoid Bald Hills Rd 15 minutes either side of the School Bus time Table for Bald Hills Rd.



- 0, All Trucks are to announce their arrival and departure on Bald Hills Rd on UHF Channel 28
 1, All Trucks are to Call up "Truck Inbound on Cornell's" UHF Channel 28 When entering Cornell's Rd
 2, Trucks are to call "Inbound" or "Out bound at Dog Leg" When Approaching Area 2
 3 Trucks are to Call "Inbound" or "Out Bound at Sawmill" When Approaching area 3
 4 Trucks are to cease the use of Jake Brakes and reduce speed to 15Klm when approaching area 4
 5 Trucks are to announce their arrival or departure at quarry gate "Truck entering Quarry" or "Truck Leaving Quarry"



Site Map and Stockpile Areas:

Sheridans Hard Rock Quarry produces a number of high quality products and as such need various stockpiles to meet individual customer requirements. Trucks entering the quarry will be directed by the loader on site where they will be loaded from.

Generally, unless otherwise directed, truck enter the quarry footprint and travers in a clockwise direction. Aggregates are stockpiled on the top level of the quarry. Road Base is stockpiled below where production equipment is located.

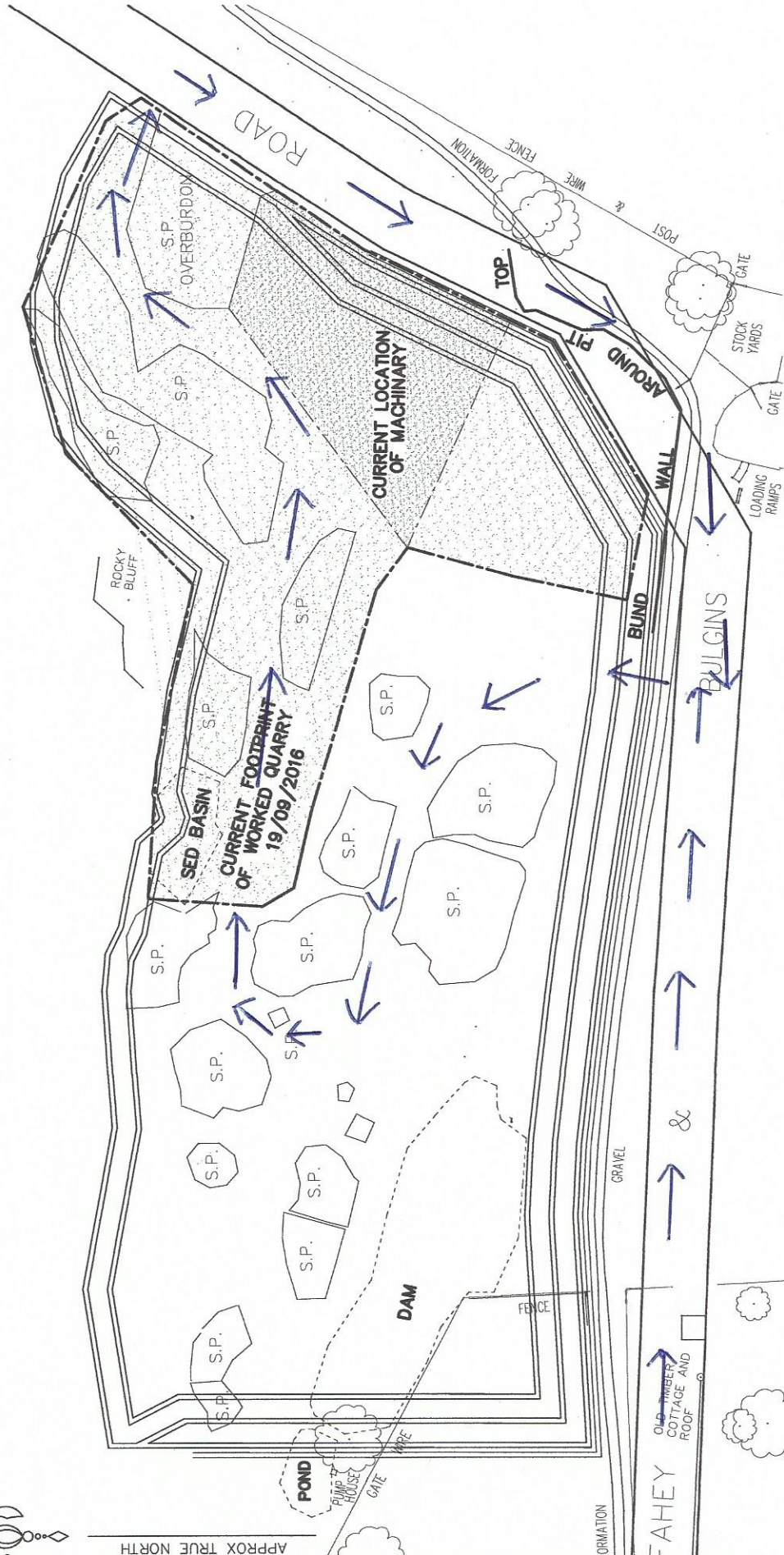
Drivers are to call "truck down the ramp" before entering the quarry pit.

Trucks are to give way to all quarry equipment.

Please refer to Quarry Survey Map next page



APPROX TRUE NORTH



PLANNING SURVEYORS/URBAN PLANNERS/PROJECT MANAGERS

ewnam Karl Weir
and Partners Pty Ltd

5 Murdock Street, Coffs Harbour 2450
Phone: 02 6652 6630
Fax: 02 6652 3064
ABN 21 100 904 783
ACN 100 904 783

PLAN OF SURVEY INFORMATION
LOT 63 DP752807 AT FAHEY & BULGINS ROAD
COFFS HARBOUR HERNANI
PLAN SHOWING EXTEND OF QUARRY AND STOCKPILES

DATE: 21/09/16	SURVEYED: J.S.
SCALE: 1:1250	DRAWN: J.S.
CONTOURS:	CHECKED:
SHEET SIZE: A3	SURVEY REF: 11540
DATUM:	SHEET: 1 OF 1



General Requirements

It is mandatory that all drivers hauling from Sheridans Hard Rock Quarry are to have met the following requirements.

Have completed a site induction by an approved member of management.

Hold a valid class of Heavy Vehicle Drivers Licence

Comply with any request or directive given by quarry staff.

Operate your heavy Vehicle in a safe, professional and courteous manor

Not be affected by drugs or alcohol in any way.

Be prepared to participate in random drug or alcohol testing if requested.

Not be affected by fatigue.

Drivers must comply with any directive given by quarry staff.

Quarry Speed Limits for Heavy Vehicles

The speed limit on Bald Hills Rd and Cornells Rd for Heavy Quarry Vehicles is 60Kph, with the exception of area 4 on the Maps printout for Cornells Rd which is 15Kph for the 150-meter section which is a residential area.

Sheridans endeavours to minimise the impact on our neighbours with regard to noise and places safety ahead of productivity in every aspect of our operations.

Increased speed means not only an increased risk of crashing but also increased severity if a crash occurs. Data from the Australian Transport Safety Bureau suggests that travelling 10Klm faster than the average traffic speed will at least double the risk of involvement in a casualty accident. (source RMS)

There are 2 types of speeding:

When a heavy vehicle travels posted speed limit

Where a vehicle travels faster than the road conditions safely permit, even though it is within the posted speed limit. ie rain, fog, ice, snow etc.

Drivers are aware of the "Three Strike System" implemented by the RMS which applies to all vehicles over 4.5 tonne

When a heavy vehicle is detected travelling at 15Kph or more over the relevant heavy vehicle speed limit, the mobile police unit, fixed speed camera or RMS will record a strike against that heavy vehicle. If 3 strikes are recorded against that heavy vehicle within a three-year period, that vehicle will have its registration cancelled for 3 months.

The speed limit within the quarry foot print is strictly 30Kph.

There is a **zero tolerance policy** for any driver caught speeding whilst working for or subcontracting to Sheridans Hard Rock Quarry. 1 strike and you're out!

Load Covering

All truck hauling from Sheridans Hard Rock Quarry must be fitted with manual or electric tarps. Climbing on the back of trucks to tarp loads is not permitted at this quarry.

Drivers are to ensure that any loose debris are removed from wheels, drawbars etc before leaving the quarry.

Breakdowns:

In the case of a Heavy Vehicle Breakdown, all necessary precautions must be made to render the safety of Driver, Truck and Community. If a breakdown occurs at a hazardous location and collision from other vehicles is a risk, then precautions such as Safety Triangles, Hazard warning devices Traffic Control must be implemented as soon as possible.

Sheridans Hard Rock Quarry must be notified at the earliest opportunity, so that arrangements for substitute loads and repairs can be made.

Accidents:

In the event of an accident call 112 from a mobile

Call Sheridans Hard Rock Quarry as soon as possible to initiate rapid response for incidents or accidents.

Contact Numbers

Emergency Ambulance, Fire , Police Ph 000 or 112 from a mobile

Graham Sheridan : 0427 576 198

Toby Sheridan 0488 146 601

Adrian Shortt 0418 895 266

Quarry Office 665 70 88

Declaration

I, the undersigned, hereby agree to abide by the Sheridans Hard Rock Quarry Pty Ltd Driver Code of Conduct for the transportation of Quarry Materials from Sheridans Hard Rock Quarry to its delivery location in a safe, professional, friendly and courteous manor. I have read and understand the requirements outlined in the attached document and will comply with and assist with its implementation.

Driver Full Name

Company

Signature.....

Date.....

Witnessed By.....

Date.....